

2018 All Grades for  
Ontario Local

IRN: 049478  
Address: 457 Shelby Ontario Rd  
Ontario, OH 44906-1029

County: Richland  
ITC: NCOCC  
District Type: Local School District



**Achievement**

The Achievement component represents the number of students who passed the state tests and how well they performed on them.

Performance Index

76.8%..... C

Indicators Met

33.3%..... F

[VIEW MORE DATA](#)

[VIEW GIFTED DATA](#)

COMPONENT GRADE

**C**

COMPONENT POINTS

**2.250**



**Progress**

The Progress component looks closely at the growth that all students are making based on their past performances.

Value-Added

Overall..... A

Gifted..... C

Lowest 20% in Achievement..... C

Students with Disabilities..... D

[VIEW MORE DATA](#)

COMPONENT GRADE

**B**

COMPONENT POINTS

**3.950**



**Gap Closing**

The Gap Closing component shows how well schools are meeting the performance expectations for our most vulnerable populations of students in English language arts, math and graduation.

Annual Measurable Objectives

85.8%..... B

[VIEW MORE DATA](#)

2.250

COMPONENT GRADE

**B**

COMPONENT POINTS

**3.750**



**Graduation Rate**

The Graduation Rate component looks at the percent of students who are successfully finishing high school with a diploma in four or five years.

Graduation Rates

97.3% of students graduated in 4 years..... A

99.3% of students graduated in 5 years..... A

[VIEW MORE DATA](#)

COMPONENT GRADE

**A**

COMPONENT POINTS

**4.850**



**Improving At-Risk K-3 Readers**

The K-3 Literacy component looks at how successful the school is at getting struggling readers on track to proficiency in third grade and beyond.

K-3 Literacy Improvement

38.7%..... C

[VIEW MORE DATA](#)

COMPONENT GRADE

**C**

COMPONENT POINTS

**2.250**



**Prepared for Success**

Whether training in a technical field or preparing for work or college, the Prepared for Success component looks at how well prepared Ohio's students are for all future opportunities.

[VIEW DATA](#)

COMPONENT GRADE

**D**

COMPONENT POINTS

**2.000**

Component	Component Points	Component Weight	Weighted Points
Achievement Points:	2.250	x 20.00%	= 0.450
Progress Points:	4	x 20.00%	= 0.790
Gap Closing Points:	4	x 15.00%	= 0.563
Graduation Rate Points:	5	x 15.00%	= 0.728
K-3 Literacy Points:	2	x 15.00%	= 0.338
Prepared for Success Points:	2.00	x 15.00%	= 0.790

**Overall  
Points: 3.168**



FINAL GRADE

**B**

A = 4.125 - 5.000  
B = 3.125 - 4.124  
C = 2.125 - 3.124  
D = 1.125 - 2.124  
F = 0.000 - 1.124

[Click here](#) to see the Secure Data Center - Status of Reports report

## 2018 All Grades for Ontario High School

IRN: 028670  
School Type: High School  
Address: 467 Shelby Ontario Rd  
Mansfield, OH 44906-1029

District: Ontario Local  
County: Richland  
ITC: NCOCC



### Achievement

The Achievement component represents the number of students who passed the state tests and how well they performed on them.

Performance Index

74.3%..... C

Indicators Met

70.0%..... C

[VIEW MORE DATA](#)

[VIEW GIFTED DATA](#)

COMPONENT GRADE

**C**

COMPONENT POINTS

**2.438**



### Progress

The Progress component looks closely at the growth that all students are making based on their past performances.

Value-Added

Overall..... A

Gifted..... A

Lowest 20% in Achievement..... C

Students with Disabilities..... C

[VIEW MORE DATA](#)

COMPONENT GRADE

**B**

COMPONENT POINTS

**4.400**



### Gap Closing

The Gap Closing component shows how well schools are meeting the performance expectations for our most vulnerable populations of students in English language arts, math and graduation.

Annual Measurable Objectives

68.3%..... D

[VIEW MORE DATA](#)

COMPONENT GRADE

**D**

COMPONENT POINTS

**2.000**



### Graduation Rate

The Graduation Rate component looks at the percent of students who are successfully finishing high school with a diploma in four or five years.

Graduation Rates

97.3% of students graduated in 4 years..... A

99.3% of students graduated in 5 years..... A

[VIEW MORE DATA](#)

COMPONENT GRADE

**A**

COMPONENT POINTS

**4.850**



### Improving At-Risk K-3 Readers

The K-3 Literacy component looks at how successful the school is at getting struggling readers on track to proficiency in third grade and beyond.

K-3 Literacy Improvement

0.0%..... N

[VIEW MORE DATA](#)

COMPONENT GRADE

**NR**

COMPONENT POINTS

**NA**



### Prepared for Success

Whether training in a technical field or preparing for work or college, the Prepared for Success component looks at how well prepared Ohio's students are for all future opportunities.

[VIEW DATA](#)

COMPONENT GRADE

**D**

COMPONENT POINTS

**2.000**

Component	Component Points	Component Weight	Weighted Points
Achievement Points:	2.438	x 23.00%	= 0.561
Progress Points:	4.400	x 23.00%	= 1.012
Gap Closing Points:	2.000	x 18.00%	= 0.360
Graduation Rate Points:	4.850	x 18.00%	= 0.873
K-3 Literacy Points:	NA	x 0.00%	=
Prepared for Success Points:	2.000	x 18.00%	= 1.012

**Overall Points: 3.166**



FINAL GRADE

**B**

A = 4.125 - 5.000  
B = 3.125 - 4.124  
C = 2.125 - 3.124  
D = 1.125 - 2.124  
F = 0.000 - 1.124

## 2018 All Grades for Ontario Middle School

IRN: 028688  
School Type: Middle School  
Address: 447 Shelby Ontario Rd  
Mansfield, OH 44906-1029

District: Ontario Local  
County: Richland  
ITC: NCOCC



### Achievement

The Achievement component represents the number of students who passed the state tests and how well they performed on them.

Performance Index

77.2%..... C

Indicators Met

20.0%..... F

[VIEW MORE DATA](#)

[VIEW GIFTED DATA](#)

COMPONENT GRADE

**C**

COMPONENT POINTS

**2.188**



### Progress

The Progress component looks closely at the growth that all students are making based on their past performances.

Value-Added

Overall..... A

Gifted..... C

Lowest 20% in Achievement..... B

Students with Disabilities..... B

[VIEW MORE DATA](#)

COMPONENT GRADE

**B**

COMPONENT POINTS

**4.400**



### Gap Closing

The Gap Closing component shows how well schools are meeting the performance expectations for our most vulnerable populations of students in English language arts, math and graduation.

Annual Measurable Objectives

100.0%..... A

[VIEW MORE DATA](#)

COMPONENT GRADE

**A**

COMPONENT POINTS

**5.000**



### Graduation Rate

The Graduation Rate component looks at the percent of students who are successfully finishing high school with a diploma in four or five years.

Graduation Rates

0.0% of students graduated in 4 years..... NR

0.0% of students graduated in 5 years..... NR

[VIEW MORE DATA](#)

COMPONENT GRADE

**NR**

COMPONENT POINTS

**0.000**





Department  
of Education



### Improving At-Risk K-3 Readers

The K-3 Literacy component looks at how successful the school is at getting struggling readers on track to proficiency in third grade and beyond.

K-3 Literacy Improvement  
0.0%.....

N  
R

[VIEW MORE DATA](#)

#### COMPONENT GRADE

NR

#### COMPONENT POINTS

NA



### Prepared for Success

Whether training in a technical field or preparing for work or college, the Prepared for Success component looks at how well prepared Ohio's students are for all future opportunities.

#### COMPONENT GRADE

NR

#### COMPONENT POINTS

0.000

[VIEW DATA](#)

Component	Component Points	Component Weight	Weighted Points
Achievement Points:	2.188	x 35.00%	= 0.766
Progress Points:	4.400	x 35.00%	= 1.540
Gap Closing Points:	5.000	x 30.00%	= 1.500
Graduation Rate Points:	0.000	x 0.00%	= 0.000
K-3 Literacy Points:	NA	x 0.00%	=
Prepared for Success Points:	0.000	x 0.00%	= 1.540

**Overall  
Points: 3.806**



#### FINAL GRADE

B

A = 4.125 - 5.000  
B = 3.125 - 4.124  
C = 2.125 - 3.124  
D = 1.125 - 2.124  
F = 0.000 - 1.124

## 2018 All Grades for Stingel Elementary School

IRN: 139485  
School Type: Elementary School  
Address: 426 Shelby Ontario Rd  
Ontario, OH 44906-1030

District: Ontario Local  
County: Richland  
ITC: NCOCC



### Achievement

The Achievement component represents the number of students who passed the state tests and how well they performed on them.

Performance Index

77.8%..... C

Indicators Met

22.2%..... F

[VIEW MORE DATA](#)

[VIEW GIFTED DATA](#)

#### COMPONENT GRADE

C

#### COMPONENT POINTS

2.375



### Progress

The Progress component looks closely at the growth that all students are making based on their past performances.

Value-Added

Overall..... F

Gifted..... F

Lowest 20% in Achievement..... F

Students with Disabilities..... F

[VIEW MORE DATA](#)

#### COMPONENT GRADE

F

#### COMPONENT POINTS

1.000



### Gap Closing

The Gap Closing component shows how well schools are meeting the performance expectations for our most vulnerable populations of students in English language arts, math and graduation.

Annual Measurable Objectives

87.5%..... B

[VIEW MORE DATA](#)

#### COMPONENT GRADE

B

#### COMPONENT POINTS

4.000



### Graduation Rate

The Graduation Rate component looks at the percent of students who are successfully finishing high school with a diploma in four or five years.

Graduation Rates

0.0% of students graduated in 4 years..... NR

0.0% of students graduated in 5 years..... NR

[VIEW MORE DATA](#)

#### COMPONENT GRADE

NR

#### COMPONENT POINTS

0.000



### Improving At-Risk K-3 Readers

The K-3 Literacy component looks at how successful the school is at getting struggling readers on track to proficiency in third grade and beyond.

K-3 Literacy Improvement

38.7%..... C

[VIEW MORE DATA](#)

#### COMPONENT GRADE

C

#### COMPONENT POINTS

2.250



### Prepared for Success

Whether training in a technical field or preparing for work or college, the Prepared for Success component looks at how well prepared Ohio's students are for all future opportunities.

#### COMPONENT GRADE

NR

#### COMPONENT POINTS

0.000

[VIEW DATA](#)

Component	Component Points	Component Weight	Weighted Points
Achievement Points:	2.375	x 27.50%	= 0.653
Progress Points:	1.000	x 27.50%	= 0.275
Gap Closing Points:	4.000	x 22.50%	= 0.900
Graduation Rate Points:	0.000	x 0.00%	= 0.000
K-3 Literacy Points:	2.250	x 22.50%	= 0.506
Prepared for Success Points:	0.000	x 0.00%	= 0.275

**Overall  
Points: 2.334**



#### FINAL GRADE

C

A = 4.125 - 5.000  
B = 3.125 - 4.124  
C = 2.125 - 3.124  
D = 1.125 - 2.124  
F = 0.000 - 1.124

[Click here](#) to see the Secure Data Center - Status of Reports report

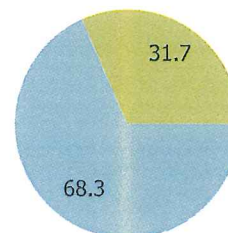
## 2018 Financial Data for Ontario Local

IRN: 049478  
Address: 457 Shelby Ontario Rd  
Ontario, OH 44906-1029

County: Richland  
ITC: NCOCC  
District Type: Local School District

### Classroom Spending

<b>Classroom Instruction</b>	\$11,428,392.59	68.3%
<b>Non-Classroom</b>	\$5,305,115.25	31.7%
<b>Total</b>	\$16,733,507.84	



[Analyze...](#)

Rank in Comparison Group for Pct Spending on Classroom Instruction: 93 out of 273

### Spending per Pupil

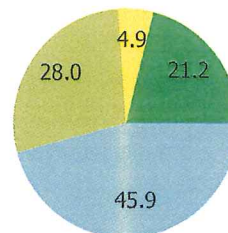
Equivalent Expenditures per Pupil, based on a weighted ADM, will be displayed on your district's Financial Data page of the Report Card as "Spending per Pupil".

The "historical" method of calculating Expenditure per Pupil, based on year end ADM, will be available only in the Advanced Reports section of the Report Card.

<b>Equivalent Enrollment</b>	2,173.1	<b>Enrollment</b>	1,910.6
Classroom Instruction Expend per Pupil	\$5,259.10	Classroom Instruction Expend per Pupil	\$5,981.50
Non-Classroom Expend per Pupil	\$2,441.30	Non-Classroom Expend per Pupil	\$2,776.70
<b>Operating Spending per Pupil</b>	<b>\$7,700.50</b>	<b>"Historical" Expend per Pupil</b>	<b>\$8,758.20</b>

### Source of Funds

<b>Local</b>	\$8,875,255.90	45.9%
<b>State</b>	\$5,413,953.79	28.0%
<b>Federal</b>	\$943,076.11	4.9%
<b>Other Non-Tax</b>	\$4,109,433.65	21.2%
<b>Total Revenue</b>	\$19,341,719.45	



[Click here](#) to see the Secure Data Center - Status of Reports report



## 2018 District Details for 049478 - Ontario Local

### Your District's Teachers

	All Schools in the District	High Poverty Schools	Low Poverty Schools
Percentage of teachers with at least a Bachelor's Degree	100.0	0.0	100.0
Percentage of teachers with at least a Master's Degree	54.5	0.0	68.2
Percentage of Core Academic Courses not taught by Highly Qualified Teachers	1.3	--	--
Percentage of Teachers who are Not Properly Certified or Licensed for Assigned Courses	1.1		0.7
Percentage of Teachers Teaching on Temporary, Conditional, or Substitute Credentials	--	--	--
Percent of Teachers Who are Inexperienced	2		0
Percent of Principals Who are Inexperienced	0		0

A district's high poverty schools are those ranked in the top quartile based on the percentage of the district's economically disadvantaged students. Low-poverty schools are those ranked in the bottom quartile based on the percentage of economically disadvantaged students. A district may have buildings in both quartiles, in just one quartile, or in neither quartile.

### Educators in your District

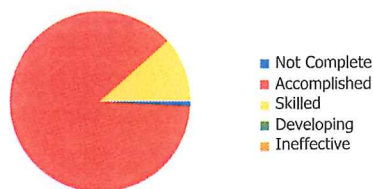
	Staff	
	#	Per 1000 Students
School Counselors	4.0	2.1
School Nurses	0.0	0.0
School Psychologists	1.0	0.5
Interpreters	0.0	0.0
Library or Media Specialists	3.0	1.6
Audiologist	0.0	0.0
Physical/Occupational Therapist	2.0	1.0
Social Worker	1.0	0.5
General Education Teachers	79.3	41.5
Career-Technical Teachers	3.0	1.6
Special Education Teachers	12.0	6.3
Teacher Aides	1.0	0.5
Gifted Intervention Specialists	0.0	0.0
Fine Arts Teachers	4.0	2.1
Music Teachers	3.0	1.6
Physical Education Teachers	6.0	3.1
ELL Specialists	0.0	0.0
Adaptive Physical Education Teachers	0.0	0.0
Speech Language Pathologists	1.0	0.5

### Your District's Principals

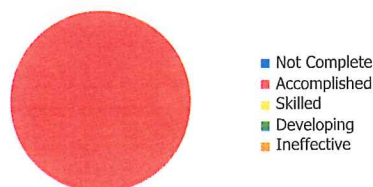
Percentage of principals with at least a Bachelor's Degree	100.0
Percentage of principals with at least a Master's Degree	100.0
Lead or Senior Teachers	4.0

## Teacher & Principal Evaluations

	Teachers	
	#	%
Count	103	
Accomplished	90	87.4
Skilled	12	11.7
Developing	0	0.0
Ineffective	0	0.0
Not Completed	1	1.0



	Principals	
	#	%
Count	3	
Accomplished	3	100.0
Skilled	0	0.0
Developing	0	0.0
Ineffective	0	0.0
Not Completed	0	0.0



## School Choice Options: Place of Enrollment for Students Residing in the District

The School Choice Options data is a set of nine counts describing the place of enrollment for students residing in the school district, captured as a snapshot of a single day in the school year. Web links provide further information about certain options.

### Districts and STEM Schools

1,493 students enrolled in the district where they lived

378 students enrolled in another public district through Open Enrollment

18 students enrolled in another public district by means other than Open Enrollment

### Community Schools

38 students enrolled in an online community school

24 students enrolled in a site-based community school

19 students enrolled in a Dropout Prevention and Recovery Program (online or site-based)

### Non-Public Schools\*

students participated in the EdChoice Scholarship or Cleveland Scholarship Program

7 students participated in the EdChoice Expansion Program

6 Students participated in the Ohio Autism Scholarship or Jon Peterson Special Needs Scholarship Program

\*ODE does not collect and cannot report information on district residents who are non-voucher students attending a non-public school.

[Click here](#) to see the Secure Data Center - Status of Reports report

## 2018 Graduation Rates for Ontario Local

IRN: 049478  
Address: 457 Shelby Ontario Rd  
Ontario, OH 44906-1029

County: Richland  
ITC: NCOCC  
District Type: Local School District

### 4-Year Graduation Rate

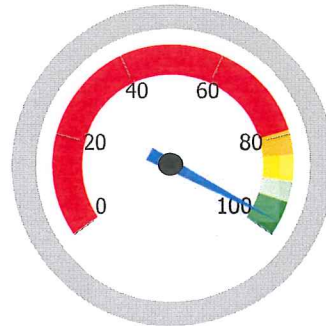
The 4-year graduation rate applies to the Class of 2017 who graduated within four years, i.e. students who entered the 9th grade in 2014 and graduated by 2017.

**Class of 2017  
Graduates:**  
142

**Students  
Countable in  
Class of 2017**  
146

**Graduation Rate:**

**97.3**



**GRADE**

**A**

A = 93.0 - 100.0%  
B = 89.0 - 92.9%  
C = 84.0 - 88.9%  
D = 79.0 - 83.9%  
F = 0.0 - 78.9%

### 5-Year Graduation Rate

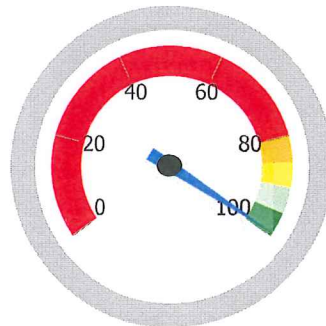
The 5-year graduation rate applies to the Class of 2016 who graduated within five years, i.e. students who entered the 9th grade in 2013 and graduated by 2017.

**Class of 2016  
Graduates:**  
143

**Students  
Countable in  
Class of 2016**  
144

**Graduation Rate:**

**99.3**



**GRADE**

**A**

A = 95.0 - 100.0%  
B = 90.0 - 94.9%  
C = 85.0 - 89.9%  
D = 80.0 - 84.9%  
F = 0.0 - 79.9%

### Component Grade

4-year Graduation Rate contributes 60% to the Graduation Component Grade, while 5-Year Graduation Rate contributes 40%. If a district has only one of those measures, then that measure contributes 100%. If neither measure is graded, then the Component Grade is Not Rated

**4-Year Points Earned**

**5-Year Points Earned**



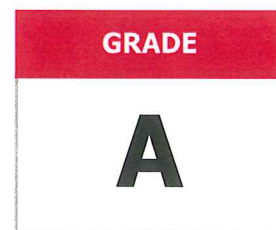
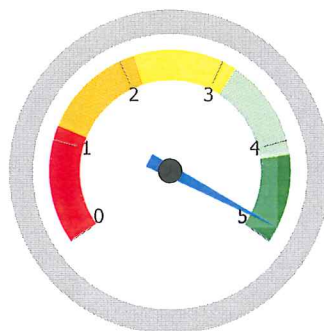
Grade	Percentage	Points
<b>A</b>	98.25% - 100.00%	5
	96.50% - 98.24%	4.75
	94.75% - 96.49%	4.5
	93.00% - 94.74%	4.25
<b>B</b>	92.00% - 92.99%	4
	91.00% - 91.99%	3.75
	90.00% - 90.99%	3.5
	89.00% - 89.99%	3.25
<b>C</b>	87.75% - 88.99%	3
	86.50% - 87.74%	2.75
	85.25% - 86.49%	2.5
	84.00% - 85.24%	2.25
<b>D</b>	82.75% - 83.99%	2
	81.50% - 82.74%	1.75
	80.25% - 81.49%	1.5
	79.00% - 80.24%	1.25
<b>F</b>	59.25% - 78.99%	1
	39.50% - 59.24%	0.75
	19.75% - 39.49%	0.5
	0.00% - 19.74%	0

Grade	Percentage	Points
<b>A</b>	98.75% - 100.00%	5
	97.50% - 98.74%	4.75
	96.25% - 97.49%	4.5
	95.00% - 96.24%	4.25
<b>B</b>	93.75% - 94.99%	4
	92.50% - 93.74%	3.75
	91.25% - 92.49%	3.5
	90.00% - 91.24%	3.25
<b>C</b>	88.75% - 89.99%	3
	87.50% - 88.74%	2.75
	86.25% - 87.49%	2.5
	85.00% - 86.24%	2.25
<b>D</b>	83.75% - 84.99%	2
	82.50% - 83.74%	1.75
	81.25% - 82.49%	1.5
	80.00% - 81.24%	1.25
<b>F</b>	60.00% - 79.99%	1
	40.00% - 59.99%	0.75
	20.00% - 39.99%	0.5
	0.00% - 19.99%	0

**4-Year Weighted Graduation Points:**  $4.75 \times 60\% = 2.850$

**5-Year Weighted Graduation Points:**  $5.00 \times 40\% = 2.000$

**District Graduation Grade Points:** **4.850**



A = 4.125 - 5.000  
 B = 3.125 - 4.124  
 C = 2.125 - 3.124  
 D = 1.125 - 2.124  
 F = 0.000 - 1.124

[Click here](#) to see the Secure Data Center - Status of Reports report



## 2018 Progress Data for Ontario Local

IRN: 049478  
Address: 457 Shelby Ontario Rd  
Ontario, OH 44906-1029

County: Richland  
ITC: NCOCC  
District Type: Local School District

### Overall

This measures the progress for all students in math and reading, grades 4-8.

GRADE	Subgroup	Grade	Progress Score (Gain Index)								
			Overall Composite	Algebra I	Social Studies	English Language Arts	English Language Arts I	English Language Arts II	Geometry	Mathematics	Mathematics II
<b>A</b>	Overall	4th Grade	-0.2			-1.4				1.4	
		5th Grade	-3.6			-2.2				-2.6	-1.9
		6th Grade	1.0		6.5	2.0				-4.1	
		7th Grade	0.4			-5.4				6.9	
		8th Grade	4.2			-0.9				6.6	2.8
		Composite Grades	5.0	7.4	6.5	-1.7	6.5	3.2	2.6	6.6	0.5

### Gifted Students

This measures the progress for students identified as gifted in reading, math, and/or superior cognitive ability.

GRADE	Subgroup	Grade	Progress Score (Gain Index)							
			Overall Composite	Algebra I	English Language Arts	English Language Arts I	English Language Arts II	Geometry	Mathematics	Science
<b>C</b>	Gifted	4th Grade	0.4		1.7				-1.1	
		5th Grade	-2.7		-1.4				-3.2	
		6th Grade	-1.1		0.3				-2.3	
		7th Grade	1.1		-2.7				5.4	
		8th Grade	0.4		0.1					0.8
		Composite Grades	0.3	3.1	-1.0	0.9	1.5	2.4	1.4	0.8

### Students in the Lowest 20% of Achievement

This measures the progress for students identified as the lowest 20% statewide in reading and math achievement.

GRADE	Subgroup	Grade	Progress Score (Gain Index)							
			Overall Composite	Algebra I	Social Studies	English Language Arts	English Language Arts I	English Language Arts II	Geometry	Mathematics
<b>C</b>	Low 20	4th Grade	-3.1			-3.8				-0.8
		5th Grade	0.0			0.6				-0.5
		6th Grade	2.2		1.6	2.1				0.5
		7th Grade	-0.8			-1.3				0.1
		8th Grade	0.6			0.2				0.6
		Composite Grades	-0.4	1.4	1.6	-1.6	-0.2	-0.7	0.6	0.3

### Students with Disabilities

This measures the progress for students with disabilities.

GRADE	Subgroup	Grade	Progress Score (Gain Index)							
			Overall Composite	Algebra I	Social Studies	English Language Arts	English Language Arts I	English Language Arts II	Mathematics	Science
<b>D</b>	SWD	4th Grade	-4.1			-4.0			-2.1	
		5th Grade	-0.5			0.4			-0.7	-1.2
		6th Grade	3.7		2.8	3.7			1.0	
		7th Grade	-1.6			-1.1			-1.4	
		8th Grade	-0.2			-0.9			1.1	-1.0
		Composite Grades	-1.7	-1.4	2.8	-1.2	-0.0	-0.1	-1.4	-1.5

### Progress Component Grade

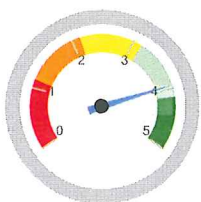
Points are assigned to assigned to the Overall, Gifted, Lowest 20%, and Students with Disabilities Value Added grades.

A = 5 points  
B = 4 points  
C = 3 points  
D = 2 points  
F = 1 point

The weighting for each subgroup's points varies depending on how many subgroups were graded.

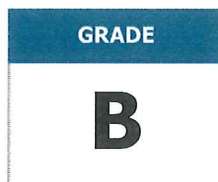
If you have this many subgroups	Then the "Overall" subgroup is weighted	And the other subgroups are weighted
4	55%	15%
3	63.25%	18.375%
2	71.5%	28.5%
1	100%	N/A

Subgroup	Grade	Points	Weight	Final Points
Overall	A	5	55.000%	2.750
Gifted	C	3	15.000%	0.450
Lowest 20%	C	3	15.000%	0.450
Students w/ Disab	D	2	15.000%	0.300
<b>Total Points</b>				<b>3.950</b>



**Grade Scale:**

A = 4.125 - 5.000  
B = 3.125 - 4.124  
C = 2.125 - 3.124  
D = 1.125 - 2.124  
F = 0.000 - 1.124



*Note: If any subgroup grade is C, D, or F, then the final grade can be no higher than B.*

[Click here](#) to see the Secure Data Center - Status of Reports report



## 2018 Prepared for Success Data for Ontario High School

IRN: 028670

### How Prepared was Your 2017 Graduating Class?

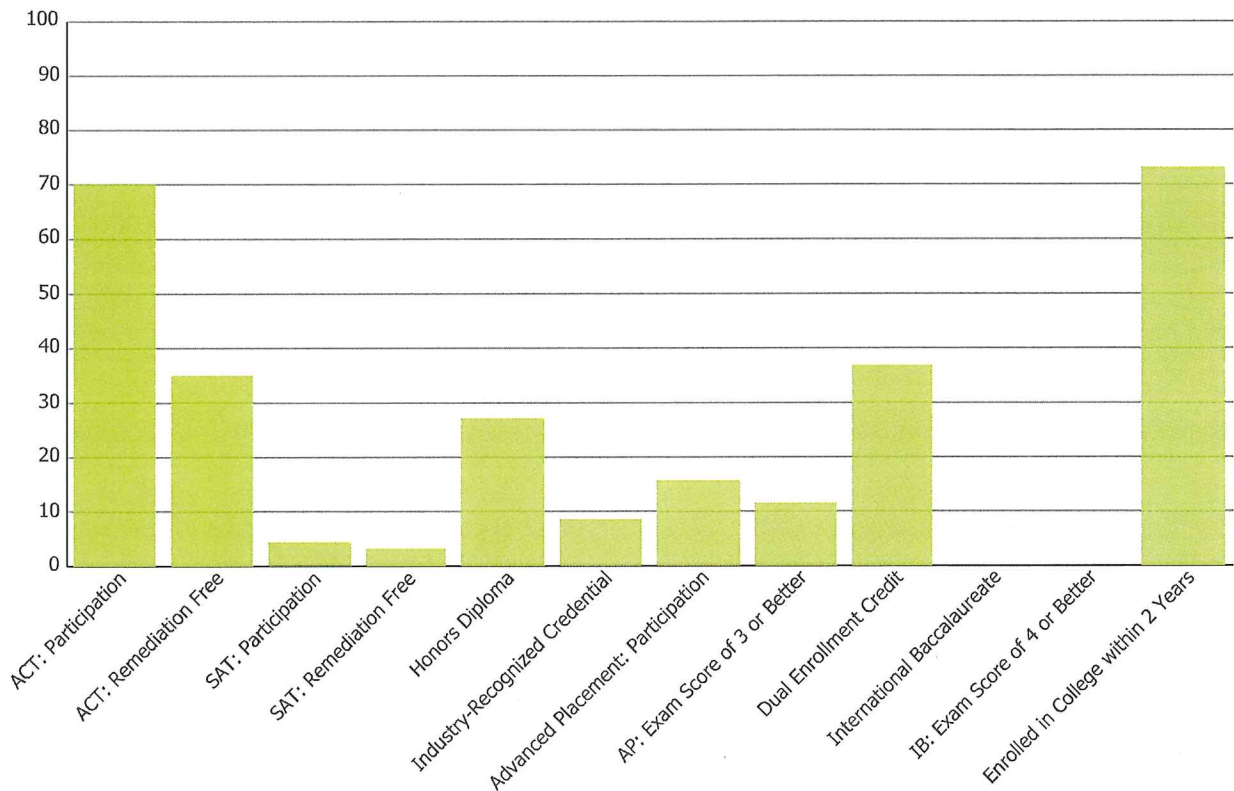
These data represent students in the 4-year and 5-year graduation cohorts, i.e. students who entered 9th grade in 2013 and 2014.

#### Denominator (4- and 5-Year Graduation Cohorts): 290

	Student #	Pct
ACT: Participation ⓘ	203	70.0
ACT: Remediation Free ⓘ	102	35.2
SAT: Participation ⓘ	13	4.5
SAT: Remediation Free ⓘ	9	3.1
Honors Diploma ⓘ	79	27.2
Industry-Recognized Credential ⓘ	25	8.6
Advanced Placement: Participation ⓘ	46	15.9
AP: Exam Score of 3 or Better ⓘ	34	11.7
Dual Enrollment Credit ⓘ	107	36.9
International Baccalaureate ⓘ	0	0.0
IB: Exam Score of 4 or Better ⓘ	0	0.0

Students from the Class of 2015 Who Enrolled in College within Two Years of Graduation	Student #	Enroll #	Pct
	131	96	73.3

Students from the Class of 2011 Who Graduated from College within Six Years of Leaving High School	Student #	Grads #	Pct
	142	65	45.8



**Number of students that earned a remediation free score on all parts of the ACT or SAT, earned an honors diploma, and/or earned an industry-recognized credential**

	Number of Students	Point Value	Points Earned
Number of students that earned a remediation free score on all parts of the ACT or SAT, earned an honors diploma, and/or earned an industry-recognized credential	136	1	136.0
The number of "bonus" students that count an additional 0.3 bonus points each, because they did the above and also earned a 3 or higher on at least one AP exam; earned a 4 or higher on at least one IB exam; and/or earned at least three college credits before leaving high school	88	0.3	26.4
<b>Total Points:</b>			162.4
<b>Graduation Cohort:</b>			290
<b>Percentage:</b>			56.0%



Grade	Percentage	Points
<b>A</b>	98.30% - 100.00%	5
	96.50% - 98.29%	4.75
	94.80% - 96.49%	4.5
	93.00% - 94.79%	4.25
<b>B</b>	88.50% - 92.99%	4
	84.00% - 88.49%	3.75
	79.50% - 83.99%	3.5
	75.00% - 79.49%	3.25
<b>C</b>	71.30% - 74.99%	3
	67.50% - 71.29%	2.75
	63.8.30% - 67.49%	2.5
	60.00% - 63.79%	2.25
<b>D</b>	55.00% - 59.99%	2
	50.00% - 54.99%	1.75
	45.00% - 49.99%	1.5
	40.00% - 44.99%	1.25
<b>F</b>	30.00% - 39.99%	1
	20.00% - 29.99%	0.75
	10.00% - 19.99%	0.5
	0.00% - 9.99%	0

**GRADE**

**D**

**Grade Scale:**



















A = 4.125 - 5.000  
 B = 3.125 - 4.124  
 C = 2.125 - 3.124  
 D = 1.125 - 2.124  
 F = 0.000 - 1.124

[Click here](#) to see the Secure Data Center - Status of Reports report

## 2018 Achievement Results for Ontario Local

IRN: 049478  
Address: 457 Shelby Ontario Rd  
Ontario, OH 44906-1029

County: Richland  
ITC: NCOCC  
District Type: Local School District

<b>State Test Indicators Met</b>							
		<b># Students Took Test</b>	<b># At Least Proficient</b>	<b>% Proficient</b>	<b>State Standard</b>	<b>State Indicator Met?</b>	
Third Grade	English Language Arts	139.0	101.0	72.7%	80.0%	NOT MET	
	Mathematics	139.0	100.0	71.9%	80.0%	NOT MET	
Fourth Grade	English Language Arts	153.0	124.0	81.0%	80.0%	MET	
	Mathematics	153.0	118.0	77.1%	80.0%	NOT MET	
Fifth Grade	English Language Arts	154.0	118.0	76.6%	80.0%	NOT MET	
	Mathematics	154.0	106.0	68.8%	80.0%	NOT MET	
	Science	154.0	107.0	69.5%	80.0%	NOT MET	
Sixth Grade	English Language Arts	170.0	124.0	72.9%	80.0%	NOT MET	
	Mathematics	170.0	117.0	68.8%	80.0%	NOT MET	
Seventh Grade	English Language Arts	166.0	129.0	77.7%	80.0%	NOT MET	
	Mathematics	166.0	125.0	75.3%	80.0%	NOT MET	
Eighth Grade	English Language Arts	156.0	103.0	66.0%	80.0%	NOT MET	
	Mathematics	127.0	96.0	75.6%	80.0%	NOT MET	
	Science	156.0	123.0	78.8%	80.0%	NOT MET	
High School	Algebra I	157.0	111.0	70.7%	80.0%	NOT MET	
	Biology	151.0	135.0	89.4%	80.0%	MET	
	English Language Arts I	184.0	156.0	84.8%	80.0%	MET	
	English Language Arts II	147.0	119.0	81.0%	80.0%	MET	



High School	End of Course Retake Improvement	134.0	40.3	30.1%	25.0%	MET	✓
	Geometry	162.0	79.0	48.8%	80.0%	NOT MET	✗
	American US Government	103.0	88.0	85.4%	80.0%	MET	✓
	American US History	150.0	130.0	86.7%	80.0%	MET	✓

[Analyze...](#)

CHRONIC ABSENTEEISM INDICATOR



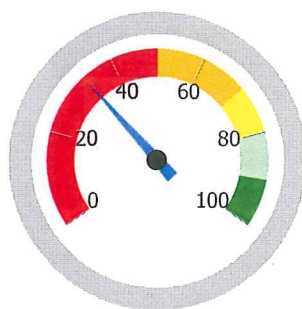
GIFTED INDICATOR



[Analyze...](#)

8 indicators met of a possible 24

**33.3%**



A = 90.0 - 100.0%  
B = 80.0 - 89.9%  
C = 70.0 - 79.9%  
D = 50.0 - 69.9%  
F = 0.0 - 49.9%

GRADE

**F**

### Performance Index

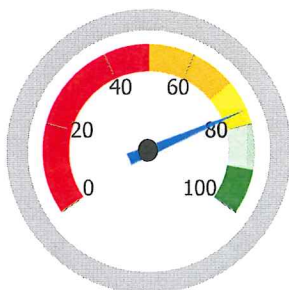
	Test Count by Level		Count of All Tests		Pct	Weight	Points
Untested	3	/	2,810	x 100 =	0.1	x 0.0 =	0.0
Limited	316	/	2,810	x 100 =	11.2	x 0.3 =	3.4
Basic	435	/	2,810	x 100 =	15.5	x 0.6 =	9.3
Proficient	840	/	2,810	x 100 =	29.9	x 1.0 =	29.9
Accelerated	690	/	2,810	x 100 =	24.6	x 1.1 =	27.0
Advanced	495	/	2,810	x 100 =	17.6	x 1.2 =	21.1
Advanced Plus	31	/	2,810	x 100 =	1.1	x 1.3 =	1.4

[Analyze...](#)

**92.1**

92.1 points of a possible 120.0

**76.8%**



A = 90.0 - 100.0%  
B = 80.0 - 89.9%  
C = 70.0 - 79.9%  
D = 50.0 - 69.9%  
F = 0.0 - 49.9%

GRADE

**C**

## Component Grade

Indicators Met contributes 25% to the Achievement Component Grade, while Performance Index Score contributes 75% of the Achievement Component Grade. If a district has only one measure, then that one graded measure is used for the component. If neither measure is graded, then the component also is not graded.

**Indicators Percent to Points**

Grade	Percentage	Points
<b>A</b>	97.5% - 100.0%	5
	95.0% - 97.4%	4.75
	92.5% - 94.9%	4.5
	90.0% - 92.4%	4.25
<b>B</b>	87.5% - 89.9%	4
	85.0% - 87.4%	3.75
	82.5% - 84.9%	3.5
	80.0% - 82.4%	3.25
<b>C</b>	77.5% - 79.9%	3
	75.0% - 77.4%	2.75
	72.5% - 74.9%	2.5
	70.0% - 72.4%	2.25
<b>D</b>	65.0% - 69.9%	2
	60.0% - 64.9%	1.75
	55.0% - 59.9%	1.5
	50.0% - 54.9%	1.25
<b>F</b>	37.5% - 49.9%	1
	25.0% - 37.4%	0.75
	12.5% - 24.9%	0.5
	0.0% - 12.4%	0

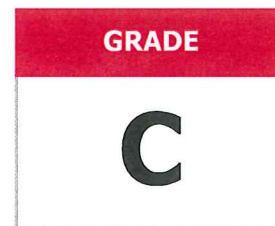
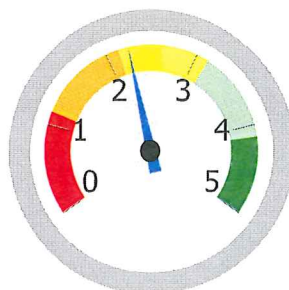
**Performance Index Percent to Points**

Grade	Percentage	Points
<b>A</b>	95.0% - 100.0%	5
	92.5% - 94.9%	4.75
	91.0% - 92.4%	4.5
	90.0% - 90.9%	4.25
<b>B</b>	87.5% - 89.9%	4
	85.0% - 87.4%	3.75
	82.5% - 84.9%	3.5
	80.0% - 82.4%	3.25
<b>C</b>	77.5% - 79.9%	3
	75.0% - 77.4%	2.75
	72.5% - 74.9%	2.5
	70.0% - 72.4%	2.25
<b>D</b>	65.0% - 69.9%	2
	60.0% - 64.9%	1.75
	55.0% - 59.9%	1.5
	50.0% - 54.9%	1.25
<b>F</b>	40.0% - 49.9%	1
	30.0% - 39.9%	0.75
	15.0% - 29.9%	0.5
	0.0% - 14.9%	0

**Indicator**  
**Weighted Points:**  $0.75 \times 25\% = 0.188$

**Performance Index**  
**Weighted Points:**  $2.75 \times 75\% = 2.063$

**District Achievement**  
**Grade Points:** **2.250**



A = 4.125 - 5.000  
B = 3.125 - 4.124  
C = 2.125 - 3.124  
D = 1.125 - 2.124  
F = 0.000 - 1.124